

Rap1B

Catalog Number: 10120

Synonyms: Member of RAS oncogene family, K-REV, RAL1B

Background: Small GTPases are a super-family of cellular signaling regulators. Rap family members (Rap1A, Rap1B, Rap2A, Rap2B, and Rap2C) are Ras-like GTPases that regulate cell proliferation, differentiation, apoptosis and adhesion mechanisms. Rap1 (Ras-proximate-1) regulates apoptosis through interaction with two MAP3K effectors of the MEK/ERK MAP-kinase pathway.

Amino Acid Sequence: (1-184)

MREYKLVVLGSGGVGKSALTVQFVQGIFVEKYDP
TIEDSYRKQVEVDAQQCMLEILDTAGTEQFTAMRD
LYMKNQGQFALVYSITAQSTFNDLQDLREQILRVK
DTDDVPMILVGNKCDLEDERVVGKEQGQNLARQ
WNNCAFLESSAKSKINVNEIFYDLVRQINRKTPVP
GKARKKSSCQLL

Source: Human, recombinant full length, His₆-tag

Expression Host: E. coli

Molecular Weight: 21 kDa

Purity: > 98% by SDS-PAGE

Constituents: 20 mM Tris-HCl, pH 8.0, 150 mM NaCl.

Physical Appearance: White or clear

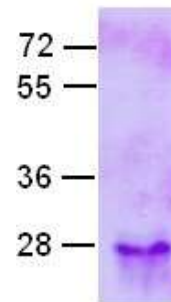
Concentration: 1 mg/mL

Storage: -80°C

Preparation Instructions

Adding of 10 mM β-mercaptoethanol or 1 mM DTT into the solution to protect the protein is recommended and using of non-ionic detergents such as n-Dodecyl β-D-maltoside (DoDM) or polyethylene detergents (e.g. C₁₂E₁₀) also help to stabilize the protein. Avoid repeated freezing and

thawing.



The purity of His-tagged Rap1B was determined by SDS-PAGE and Coomassie Brilliant Blue Staining.

References

1. Chrzanowska-Wodnicka, M. et al., *J. Clin. Invest.* 115: 680-687, 2005.
2. Hoshijima, M. et al., *Biochem. Biophys. Res. Commun.* 157: 851-860, 1988.
3. Kawata, M. et al., *Proc. Nat. Acad. Sci.* 87: 8960-8964, 1990.
4. Kawata, M. et al., *J. Biol. Chem.* 264:15688-15695, 1989.
5. Lova, P. et al., *J. Biol. Chem.* 278: 131-138, 2003.
6. Matsui, Y. et al., *Biochem. Biophys. Res. Commun.* 166: 1010-1016, 1990.
7. Pizon, V. et al., *Nucleic Acids Res.* 16:7719-only, 1988.
8. Rehmann, H. et al., *Nature* 455: 124-127, 2008.
9. Rousseau-Merck, M. F. et al., *Cytogenet. Cell Genet.* 53: 2-4, 1990.
10. Schwamborn, J. C. et al., *Nature Neurosci.* 7: 923-929, 2004.

FOR RESEARCH USE ONLY. NOT FOR DIAGNOSTIC APPLICATIONS